



CLAYBROOK

Specification Sheet

# Plinth

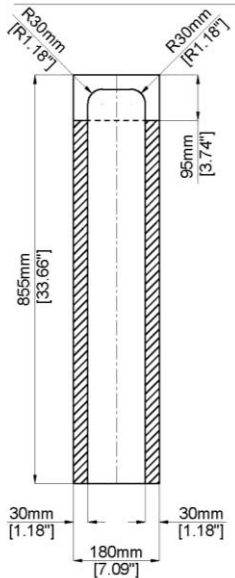
## Marble Plinth H49940

460 mm x 180 mm x 855 mm ( 18.11 " x 7.09 " x 33.66 " )  
Applicable to square / rectangular stone basins.

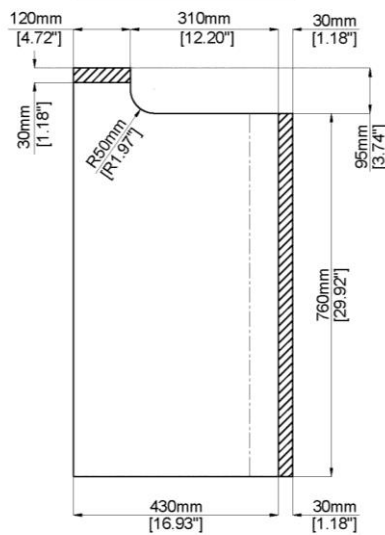


Mould Code	Description	Available Colours
H49940	Marble Plinth	Calacatta Borghini (CB)
		* Please contact us for bespoke color palette

### SECTION A-A



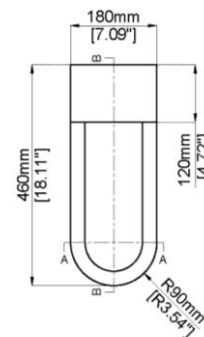
### SECTION B-B



### Technical Information

Basin weight	60.0 kg / 132 lbs
--------------	-------------------

### TOP VIEW



\* Product features/ benefits are defined by test result of specific standard (ASTM, EN/ BS, IAPMO) with Claybrook's standard colours

\* All measurements are subject to change and variation.

\* This specification sheet should not be used as an installation guide. Please contact Claybrook for CAD drawings.