



CLAYBROOK

Specification Sheet

Pebble

Countertop basin
H47031

450 mm X 450 mm X 150 mm (17.72 " X 17.72 " X 5.91 ")

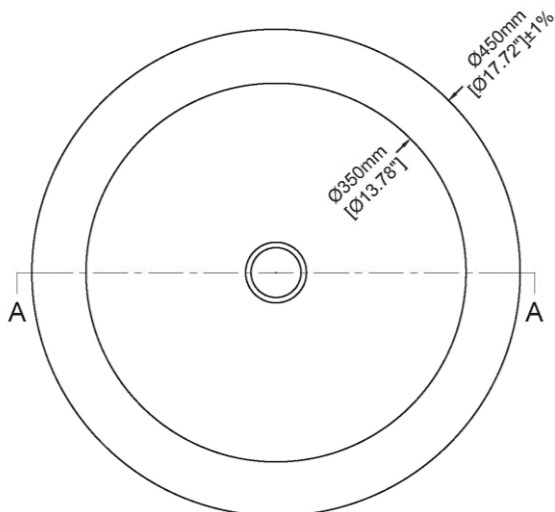
Available in various reconstituted stone colours.

Please order Chrome/MarbleForm pop up waste separately.



Mould Code	Description	Available Colours		
H47031	Reconstituted stone basin without overflow	Dover White (DW)	Mist (MI)	Pearl (PE)
		Dune (DU)	Sahara (HA)	Bahia (HB)
		Barley (BA)	Fog (FG)	Taupe (TA)
		Studio (ST)	Armory Grey (AG)	Sable (SA)
		Night Sky (NS)		

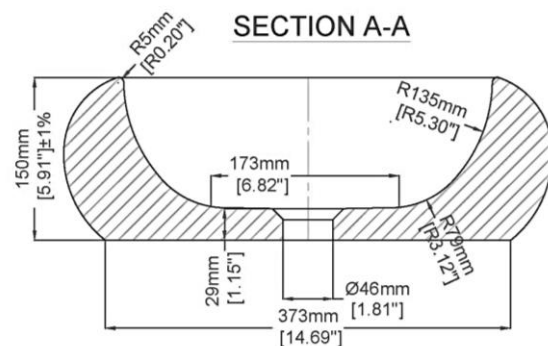
TOP VIEW



Technical Information

Basin weight	23 kg / 51 lbs
Weight with water	29.5 kg / 65 lbs
Capacity	6.5 L / 1.72 US gal

SECTION A-A



* All measurements are subject to change and variation.

* This specification sheet should not be used as an installation guide. Please contact Claybrook for CAD drawings.